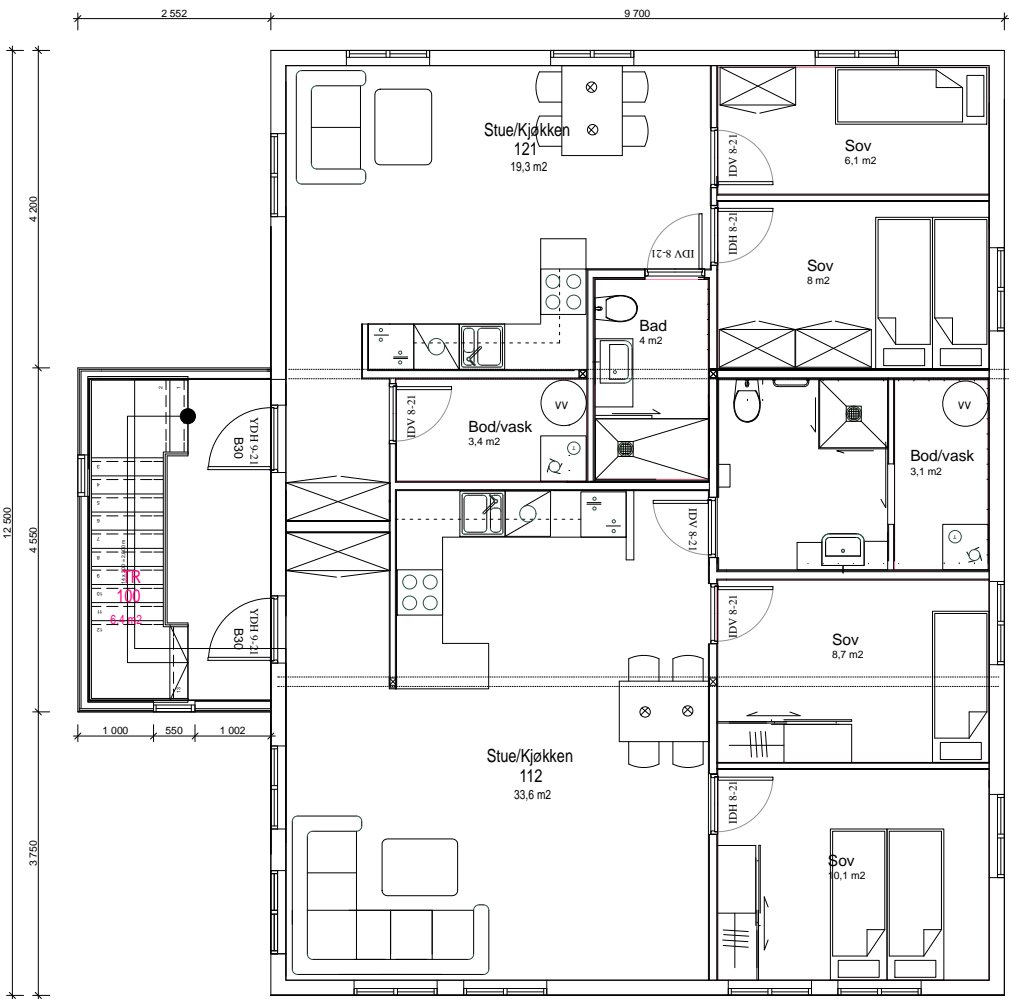


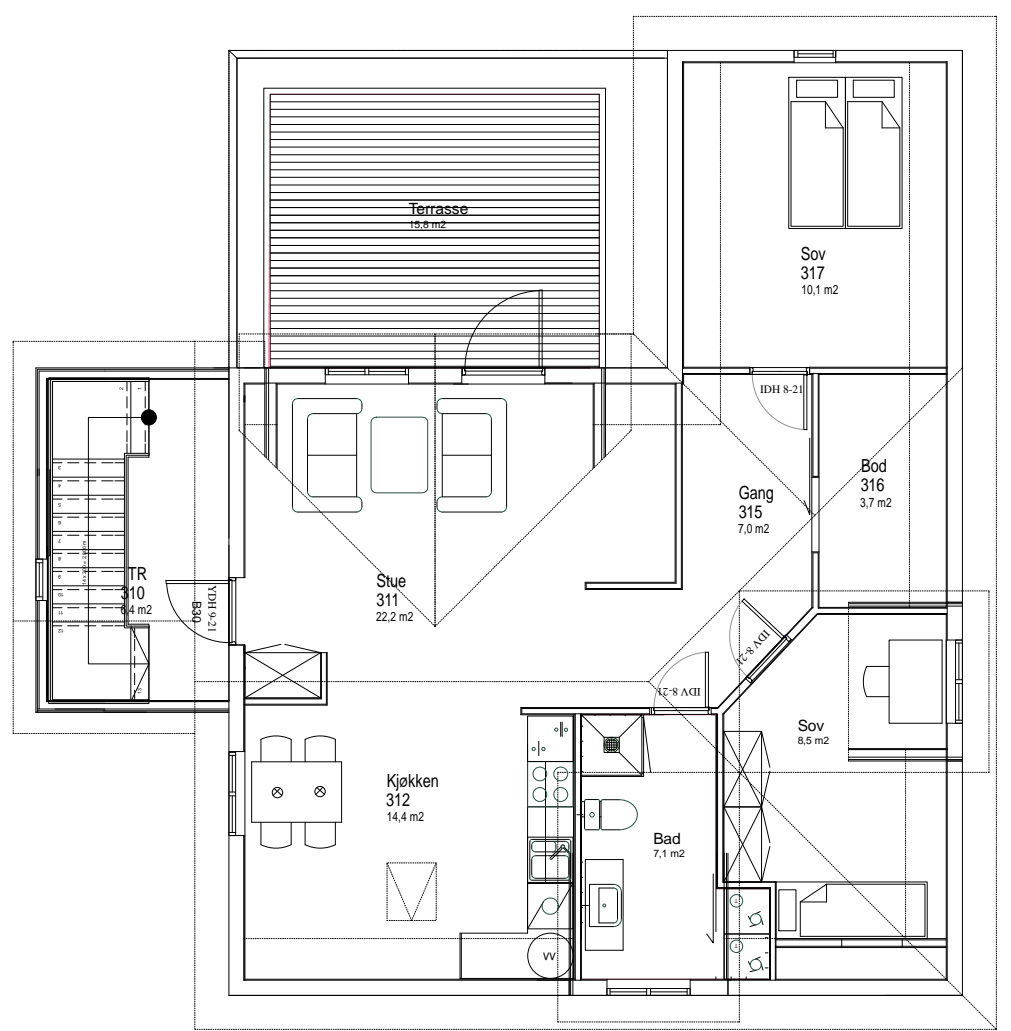
Leilighet 5
BRA 46,0 m²



Leilighet 4
BRA 65,1 m²

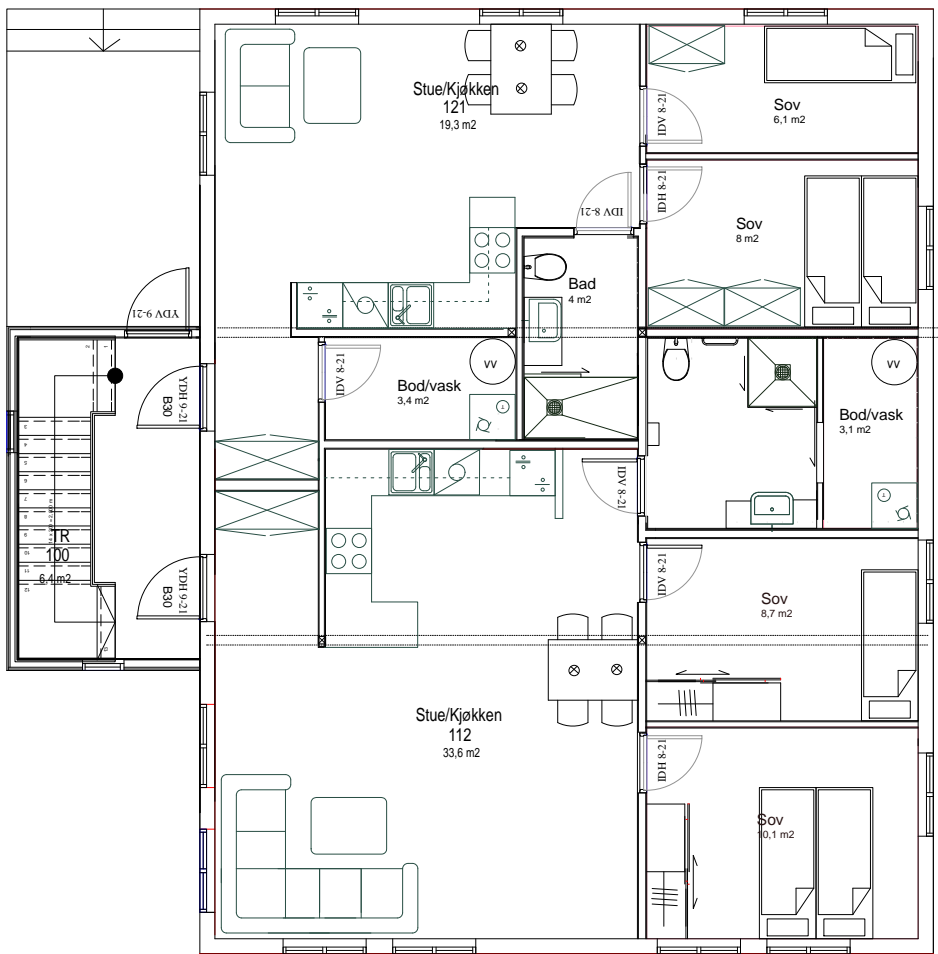
PLAN 2

Leilighet 6
80,5 m²



PLAN LOFT

Leilighet 3
BRA 46,0 m²



Leilighet 2
BRA 65,1 m²

PLAN 1



Leilighet 1
BRA 66,0 m²

KJELLER

A	Endret plassering av vinduer i trappeløp.	MS 26.03.10
Rev.	Revisjon	Tegn/Rev.dato
Prosjekt:		
PRESTENGGATA 10		
Byggherre:	TOTAL PROSJEKT AS	Tegnet MS
Tegning:	ENDRINGSSØKNAD	Mål: 1:100
PLANER		Dato: 25.01.10
		Tegn.nr.
TotalRenovering as Byggmester & Totalentreprenør		Rev. A